



BCC Presentation Windermere HS Stadium

October 24, 2023

History

2006

- OCPS completes acquisition of high school property

2015

- OCPS & County reach settlement agreement which establishes that the football stadium will be located at Deputy Scott Pine Community Park

2017/18

- New Windermere High School and Deputy Scott Pine Community Park open with all football games played at Deputy Scott Pine Community Park



Current Situation

Windermere HS

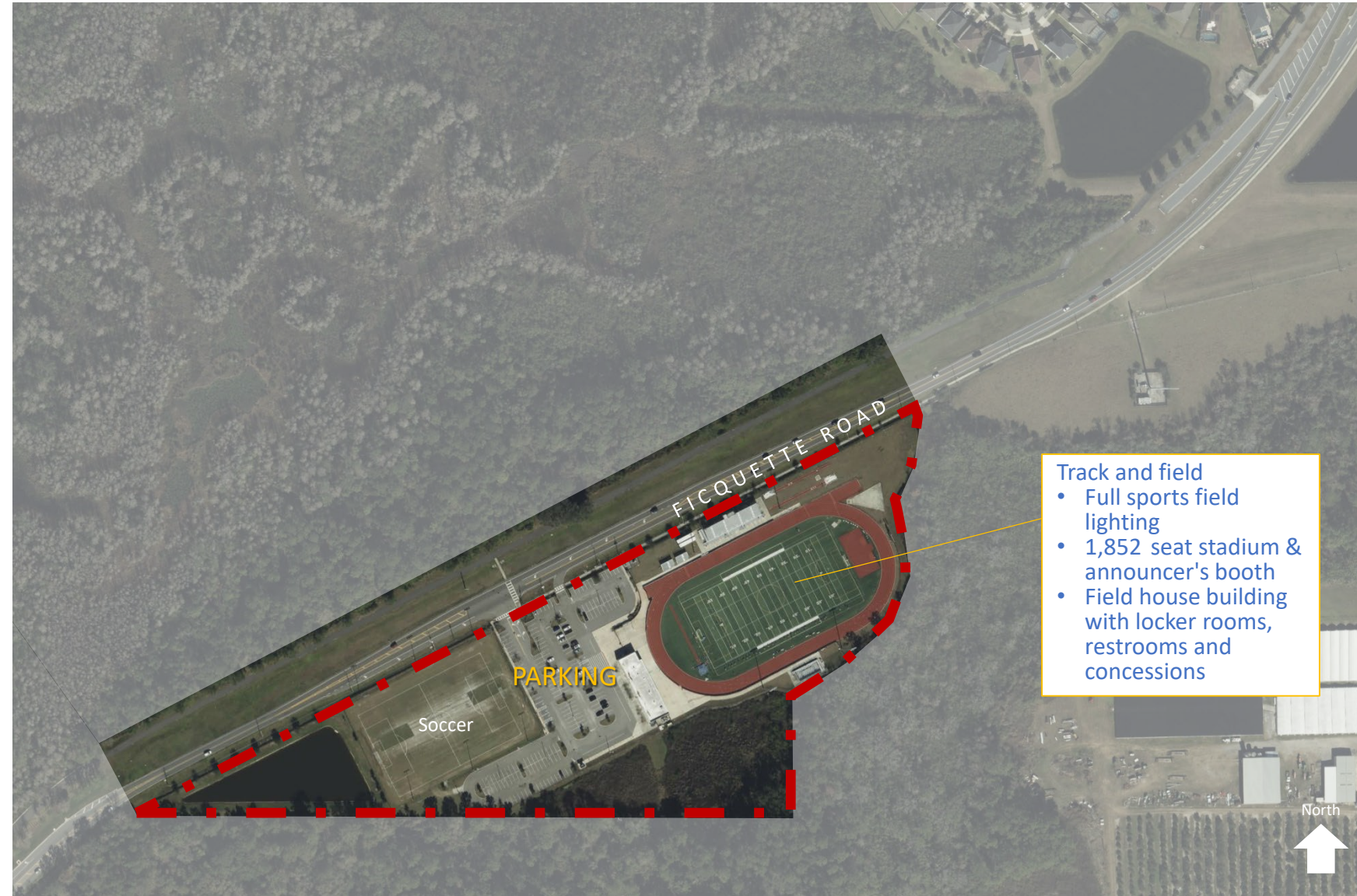
- Track and field with limited/minimal field lighting (40' tall poles) and NO seating.
- 860 on-site paved parking spaces
- Traffic signals at two main vehicular entry points



Current Situation

Deputy Scott Pine Community Park

- Competition track and field with:
 - Full sports field lighting (80' poles)
 - 1,552 stadium seating and announcer's booth
 - Field house building with locker rooms, restrooms, and concessions
- 205 on-site paved parking spaces
- Parking lot entrance is not signalized



Track and field

- Full sports field lighting
- 1,852 seat stadium & announcer's booth
- Field house building with locker rooms, restrooms and concessions

Challenges with the Current Situation

- Nowhere on site for public/spectators to shelter during a storm/lightning event.
- Traffic congestion
- Typical parking demand for events exceeds the available parking. Overflow parking on soccer field damages turf.
- Spectators use area across the street for overflow parking and drop off creating a safety issue.
- Parking in surrounding neighborhoods



Challenges with the Current Situation

- Parking in residential areas
- Impedes local traffic
- Potential to impede emergency vehicles
- Safety issue with students walking to stadium along Ficquette Rd.



Proposed Windermere High School Stadium Project

Proposed Plan

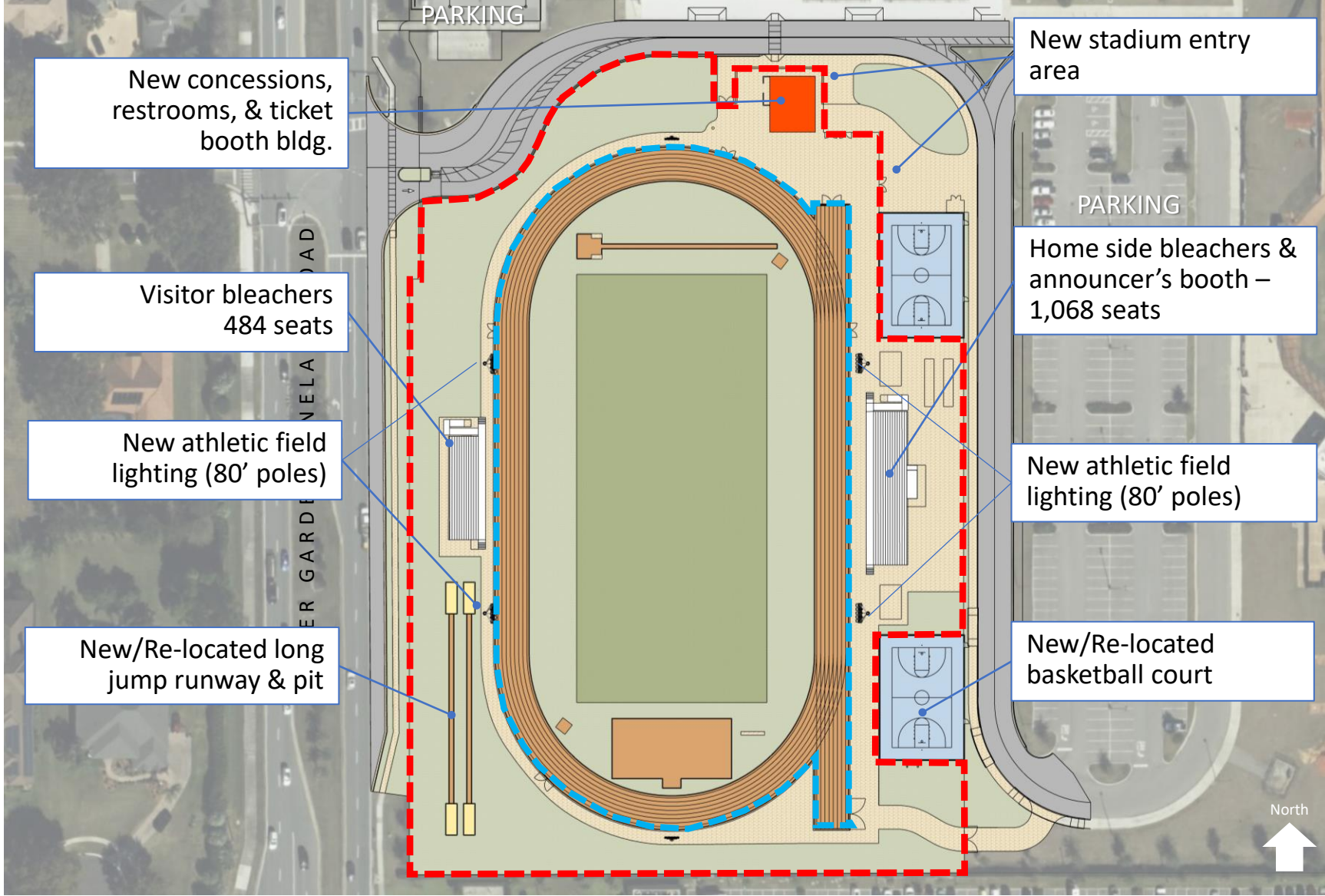
- Replace field lighting with full athletic field lighting package (80' poles)
- Construct a new restroom, concessions, and ticket booth building at north end of track
- Install stadium seating 1,552 total seats including:
 - 1,068 seats home side (east)
 - 484 seats visitor side (west)
 - Potential for 300 future/expansion seats



Proposed Windermere High School Stadium Project

Proposed Plan

- Replace field lighting with full athletic field lighting package (80' poles)
- Construct a new restroom, concessions, & ticket booth building at north end of track
- Install stadium seating 1,552
Total seats Including:
 - 1,068 Seats home side (east)
 - 484 Seats visitor side (west)
 - Potential for 300 future/ expansion seats



Proposed Windermere High School Stadium Project

Improvements vs. the Current Situation

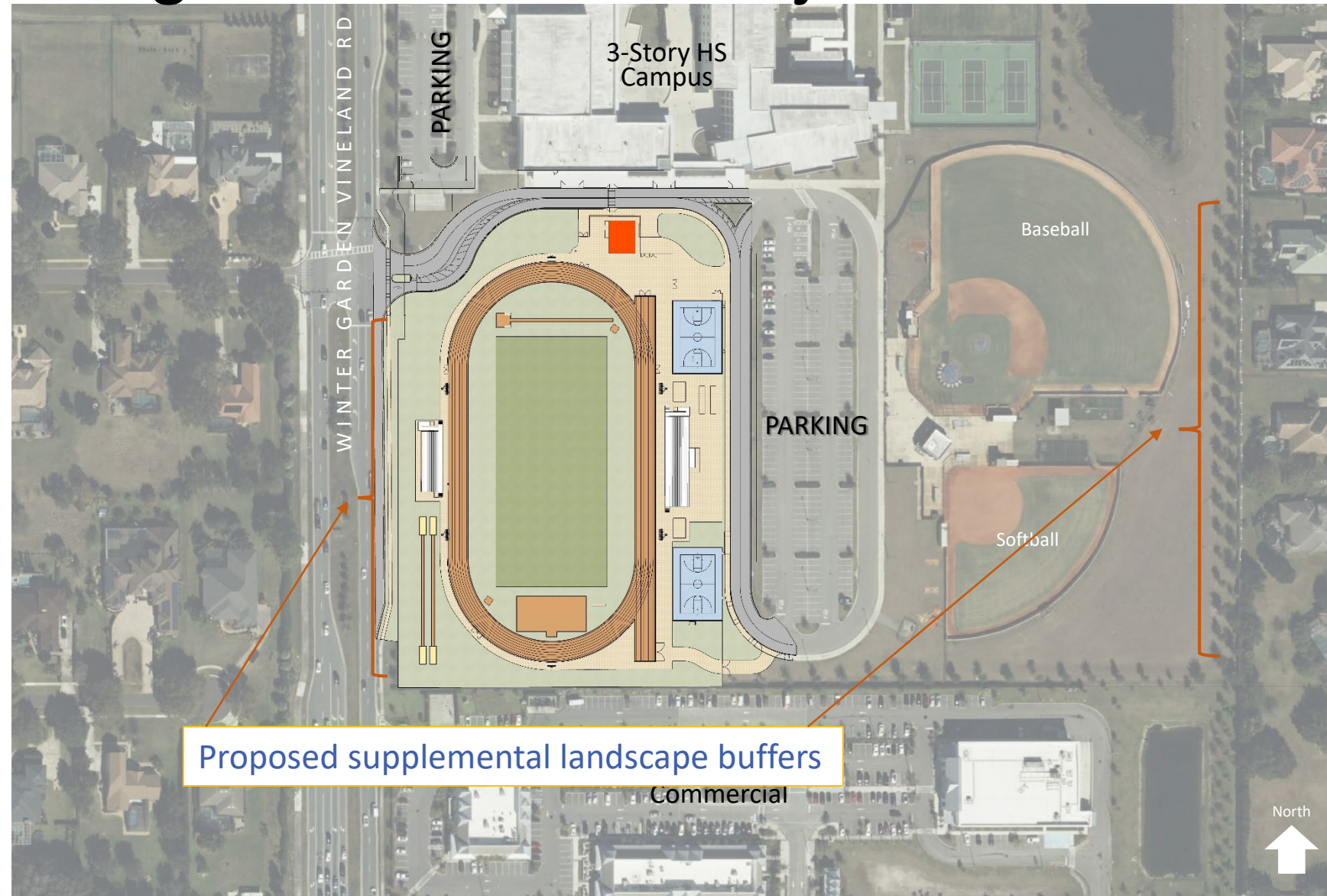
- Adjacent campus buildings provide area for shelter in case of storm/ lighting event
- 860 paved parking spaces on-site to handle the typical attendance for an event.
- Spectators will not have to cross Winter Garden Vineland Road to access stadium
- Signalized vehicular entrances provide safer traffic control



Proposed Windermere High School Stadium Project

Proposed Landscaping

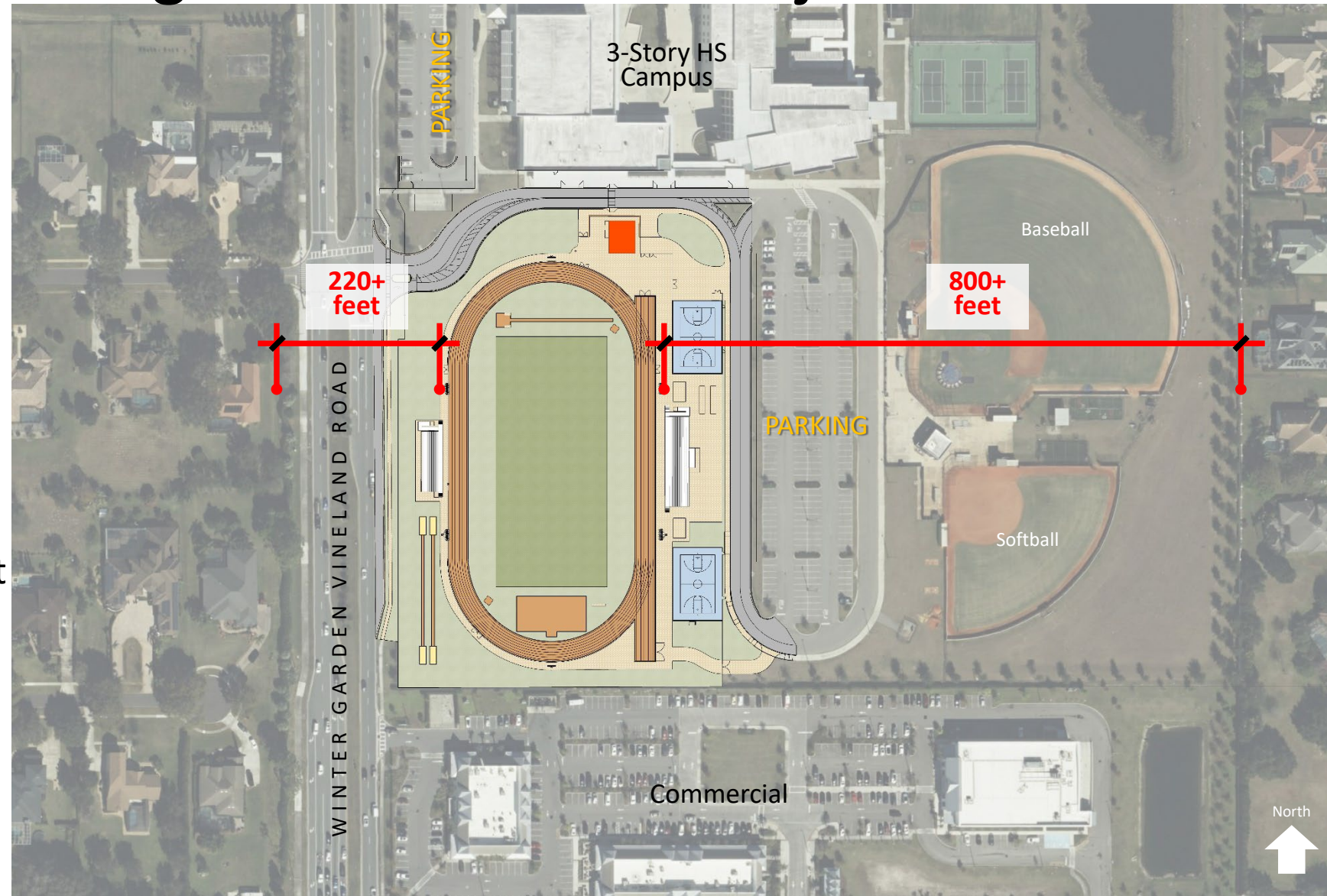
- Additional landscaping on western side of stadium
- Additional landscaping on eastern side of campus
- Additional landscaping will consist of understory trees to fill in area until live oaks reach maturity



Proposed Windermere High School Stadium Project

Field Lighting

- Lighting buffers will eliminate:
 - light spillage to adjacent properties
 - visible glare to adjacent properties
- Lighting will comply with the Orange County Lighting Ordinance
 - Less than one footcandle at the HS property line
 - Less than 1% light above horizontal





Sports Lighting Since 1976

600+

Field lighting projects in Florida since 2016

40,000+

LED fixtures in Florida since 2016



Windermere High School Stadium

Proposed Windermere High School Stadium Project

Field Lighting

The Evolution of Glare Control

What Matters in Lighting Technology **Light Control**

1977	1989	1989	1989	2005	2015
SportsCluster-	SportsCluster-2	SportsCluster-2 with Level 8"	Total Light Control™	Light-Structure Green™— HID	Light-Structure Green™— LED

Photographed at 100-feet from field edge

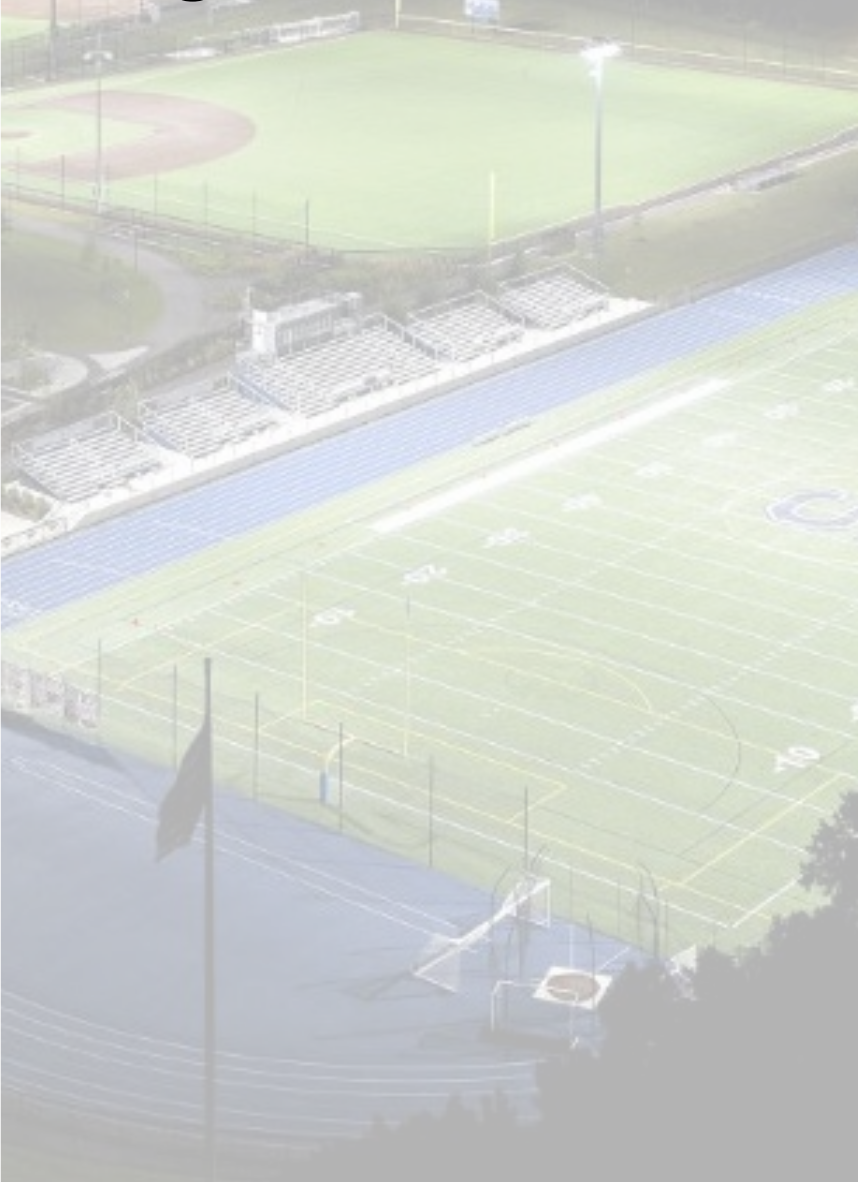
Used equal parameters for:

- On-field light level per pole
- Luminaire aiming angles
- Wattage per luminaire
- Pole distance from aiming point
- Mounting height

Proposed Windermere High School Stadium Project

Field Lighting

- New sports field lighting will be energy efficient LED
- Meet high school standards for sports field lighting
- Lighting will eliminate glare to surrounding neighbors
- Sports lighting will meet the International Dark Sky Assoc. (IDA) Community Friendly Sports Lighting Program



5 Easy Pieces™

Complete System from Foundation to Poletop

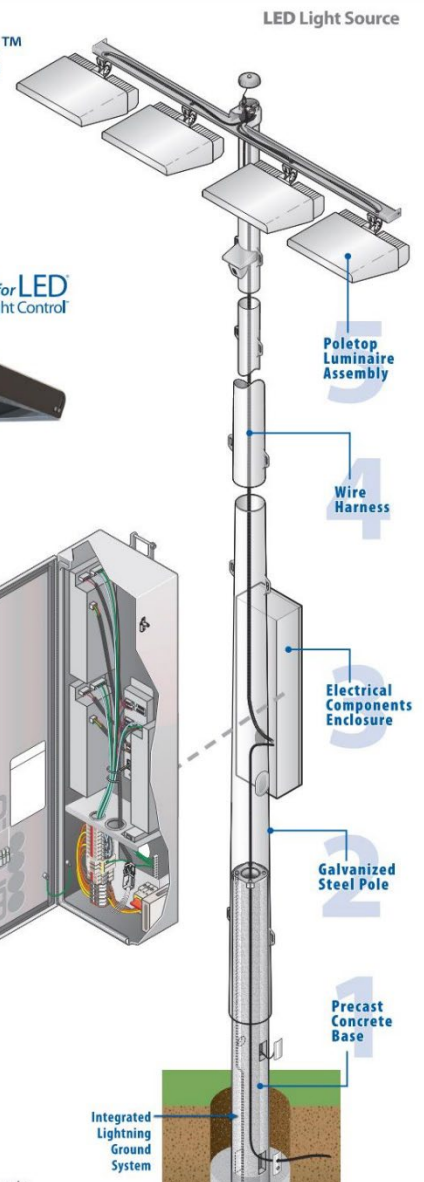


TLC for LED
Total Light Control



All components designed to work together . . . factory built, wired, aimed, and tested to assure reliable, trouble-free operation

Covered by a 25-year product assurance and warranty

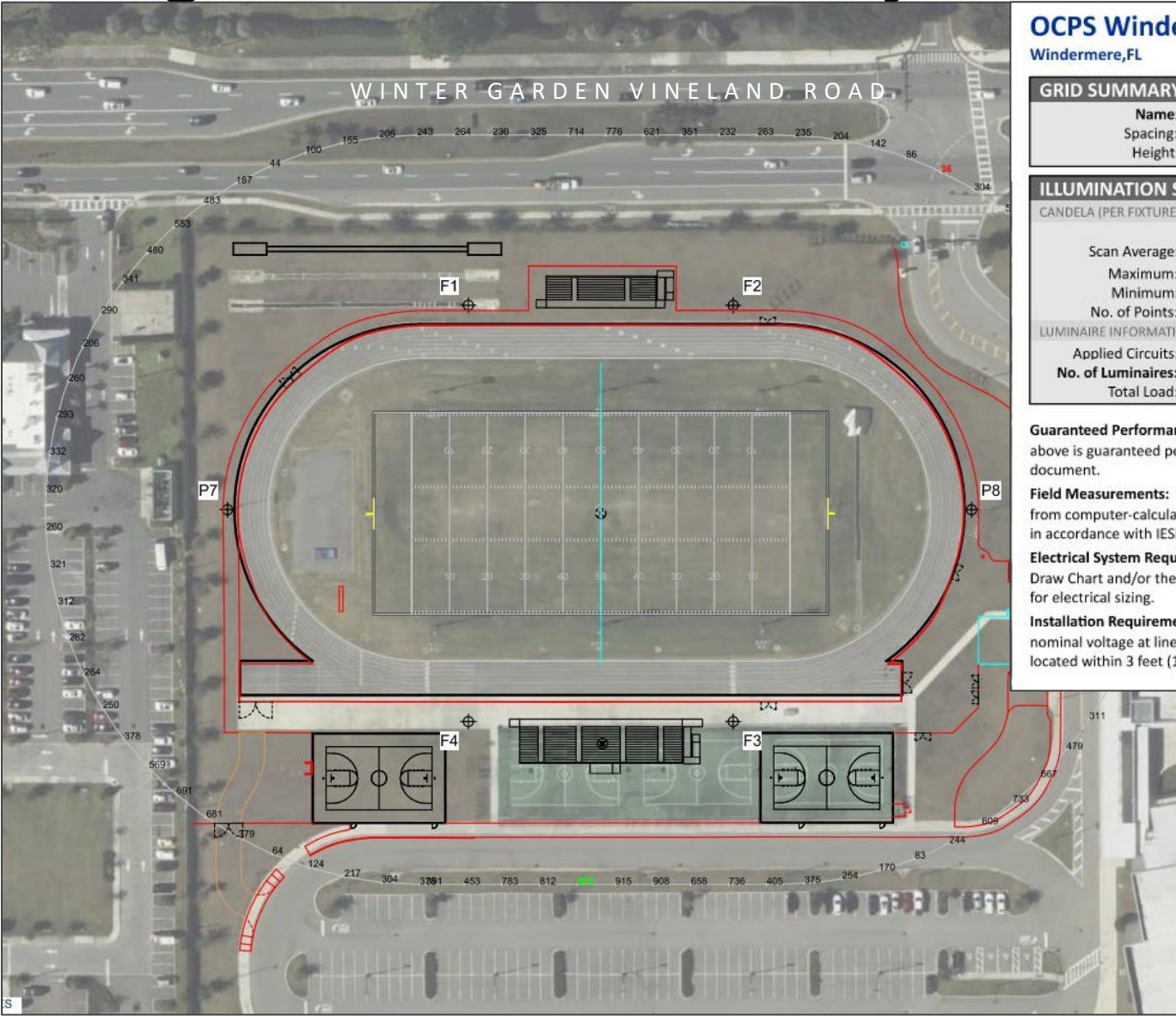


Proposed Windermere High School Stadium Project

Field Lighting

Windermere HS Photometrics

- International Dark Sky Assoc. (IDA) requires less than 1,000 candela at 150' surround the field
- Proposed lighting meets the criteria



OCPS Windermere HS Football

Windermere, FL

GRID SUMMARY

Name:	Spill 150ft Offset
Spacing:	30.0'
Height:	3.0' above grade

ILLUMINATION SUMMARY

CANDELA (PER FIXTURE)	
Scan Average:	Entire Grid 375.3376
Maximum:	951.68
Minimum:	35.79
No. of Points:	82
LUMINAIRE INFORMATION	
Applied Circuits:	A, B, C
No. of Luminaires:	50
Total Load:	49.9 kW

Guaranteed Performance: The ILLUMINATION described above is guaranteed per your Musco Warranty document.

Field Measurements: Individual field measurements may vary from computer-calculated predictions and should be taken in accordance with IESNA RP-6-15.

Electrical System Requirements: Refer to Amperage Draw Chart and/or the "Musco Control System Summary" for electrical sizing.

Installation Requirements: Results assume ± 3% nominal voltage at line side of the driver and structures located within 3 feet (1m) of design locations.

Proposed Windermere High School Stadium Project

Field Lighting

Older/Inferior Technology

With MUSCO TLC Technology



Typical Speaker Arrangement

- Example from high school built in 2021. All speakers placed on announcer's booth.
- Four speaker housings with 12" woofer and smaller 1-3" voice coils
- Two speakers pointed towards field
- Two speakers pointed to home stands
- Sound system includes limiter and digital signal processor



Summary of Conditions

- Lighting:
 - Not exceed 80 feet height.
 - Automatic cut off for daily practices at 8:00 p.m.
 - Non school related events lights to be off by 8:30 p.m.
 - For sporting events, lights to be turned off pursuant to condition #13 or as soon as the event has concluded, stadium cleared, and clean up has occurred
 - Photometric plan compliant with county ordinance using Musco Green LED. Off-site light spill prohibited
 - No lights on relocated basketball courts

Summary of Conditions (continued)

- Speakers:
 - No artificial noise makers (also prohibited by FHSAA)
 - Four speaker enclosures with 12” speakers oriented towards field and home bleachers
 - Limiter installed on P/A. Use of the P/A for practices and events without public attendance prohibited. (digital signal processor will also be used)
 - Sporting events (non-football) scheduled to conclude by 10:00 p.m. absent exigent circumstances
 - Football scheduled to conclude by 11:00 p.m. absent exigent circumstances
 - Weekend events may not use P/A system until 8:00 a.m.
 - Non school related events shall end no later than 8:00 p.m.

Summary of Conditions (continued)

- Landscaping
 - Install understory trees on east side of campus near existing buffer
 - Replace dead live oak tree on east side in existing buffer
 - Prune and fertilize existing live oak tree buffer
 - Install understory trees on west side near stadium

Special Exception Criteria

Consistent with the Comprehensive Plan

- The Comprehensive Plan provides that certain institutional uses, such as ancillary uses for public schools, as conditioned are consistent with residential Future Land Use designations through the Special Exception process.

Similar and compatible with the surrounding area

- The site is already developed with a high school with an existing occupancy of 2,800+ students and employees daily.
- Existing DSP stadium in close proximity to site
- Proposed improvements will be less of an impact and will be compatible with the adjacent properties in the area.
- Significant distance separation between the stadium from adjacent properties, which includes existing commercial retail to the south, single-family residences approximately 220 feet across Winter Garden Vineland Rd. to the west, single-family residences 800+ feet to the east and single-family residences 1,725 feet to the north.

Special Exception Criteria

Shall not act as a detrimental intrusion into a surrounding area

- The proposed improvements will be located in a manner to minimize impacts to adjacent properties.
- 220 feet from the nearest single-family property line to the west across four lane divided Winter Garden Vineland Rd.
- Existing mature Live Oak trees located adjacent to Winter Garden Vineland Rd and on the east side of the campus proposed to remain.
- Additional understory trees proposed on the east and west of the campus to add additional screening and noise mitigation.
- State of the art lighting to eliminate glare and light spill
- Sound system designed to minimize effect of noise on surrounding area

Special Exception Criteria

Meet the performance standards of the district

- All improvements will meet or exceed the performance standards of the district.

Similar in noise, vibration, dust, odor, glare, heat generation

- The property is already developed with an existing high school
- Additional activity on the property that would generate noise, vibration, dust, odor, glare, or heat is similar to other uses allowed within the Zoning district.
- Proposed improvements are similar to existing stadium to the south

Landscape buffer yards shall be in accordance with Section 24-5 of the Orange County Code

- The site is developed and the existing landscaping is in accordance with Chapter 24 (Landscaping, Buffering and Open Space) of the Orange County Code.
- Additional landscaping is proposed to further provide screening and noise reduction.

Requested Action:

Approve the application with the agreed upon conditions.

- Application meets all special exception criteria
- OCPS has agreed to provide extensive mitigation measures
- Overwhelming community support
- Safety of students and the community is paramount

Approve the Amendment to the Stadium Agreement

Our Promise. Your Support. Their Success.

Our Promise. Your Support. Their Success.

Our Promise. Your Support. Their Success.

Thank You



**Orange County
Public Schools**